



Nan Hua Primary School
Primary 3 Science
Term 1 Weighted Assessment 2021

Marks	
Section A:	/10
Section B:	/10
Total:	/20

Name: _____ ()

Class: Primary 3/ _____

Date: _____

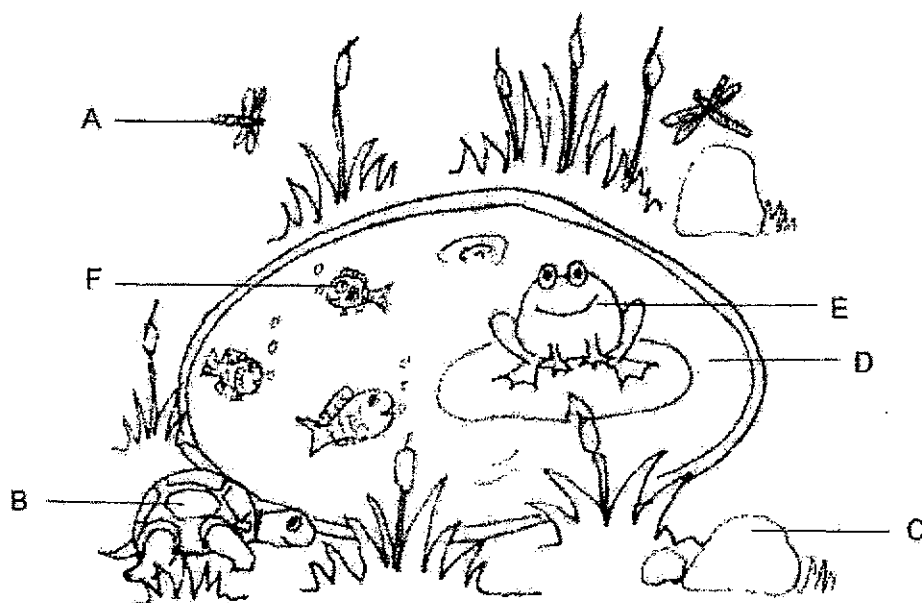
Duration: 30 minutes

Answer all questions.

Section A: (5 x 2 marks = 10 marks)

For each question from 1 to 5, four options are given. One of them is the correct answer. Make your choice (1, 2, 3 or 4) and write your answer in the brackets provided.

- 1 The picture below shows 6 things, A to F.

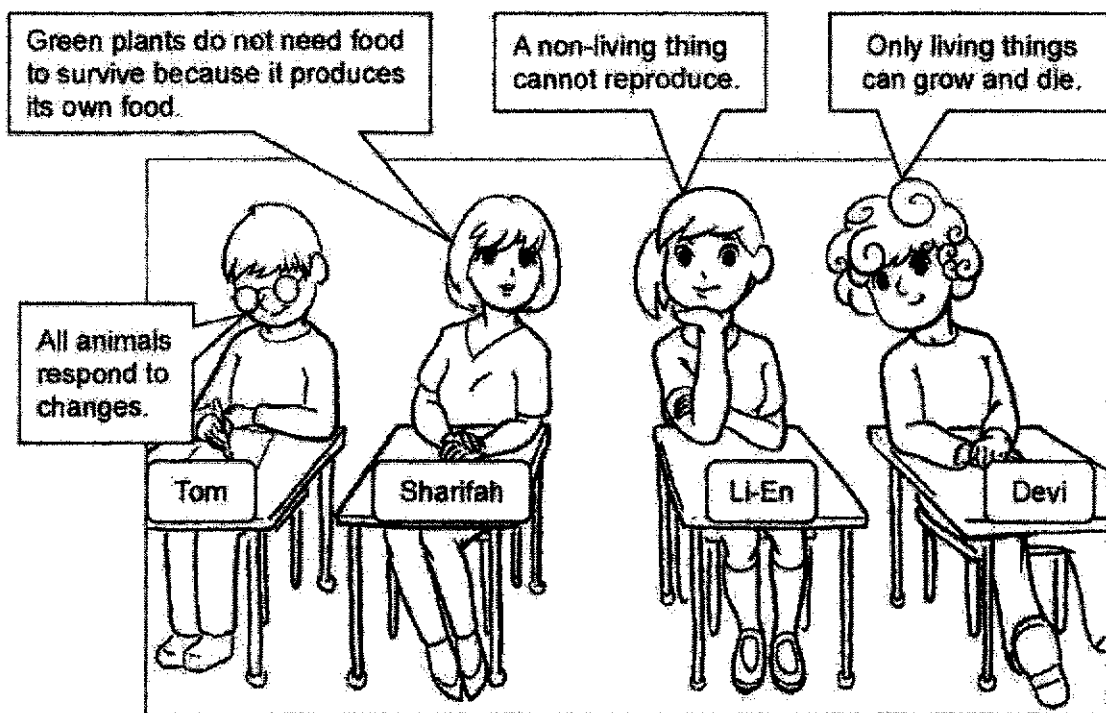


Which of the following shows the correct classification of things A to F?

	Living things	Non-living things
(1)	E and F	A, B, C and D
(2)	A, B and C	D, E and F
(3)	A, B, E and F	C and D
(4)	B, D, E and F	A and C

()

- 2 Four pupils made the following statements about living and non-living things.

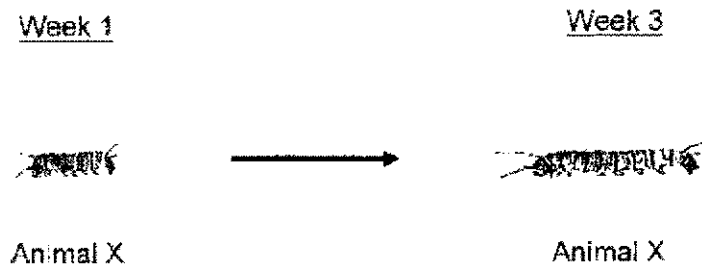


Which pupil has made a **wrong** statement?

- (1) Tom
- (2) Devi
- (3) Li-En
- (4) Sharifah

()

- 3 Bala fed animal X with fresh leaves daily and recorded down its length over 3 weeks.



Which of the following tables correctly shows the growth of animal X over 3 weeks?

(1)

Week	Length
1	4 cm
2	3 cm
3	2 cm

(2)

Week	Length
1	2 cm
2	3 cm
3	4 cm

(3)

Week	Length
1	3 cm
2	3 cm
3	3 cm

(4)

Week	Length
1	4 cm
2	3 cm
3	4 cm

()

4 Animal E has the following characteristics:

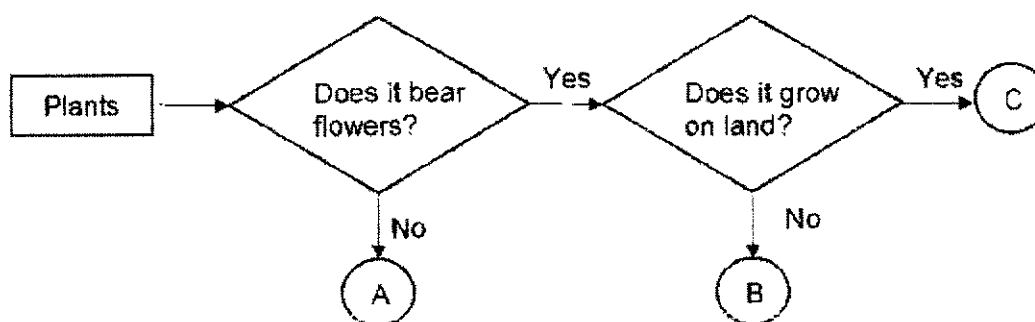
- Has wings
- Has 3 body parts
- Has hard outer body covering

Based on the information above, which animal group does animal E belong to?

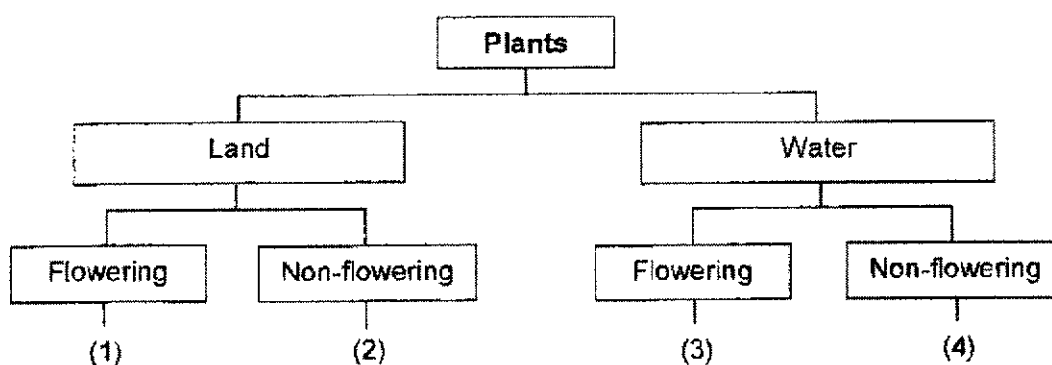
- (1) Insects
 (2) Reptiles
 (3) Mammals
 (4) Amphibians

()

5 Study the flowchart below.



Which number, 1, 2, 3 or 4, from the classification diagram below, represents plant B?



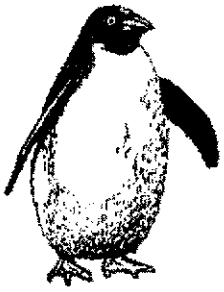

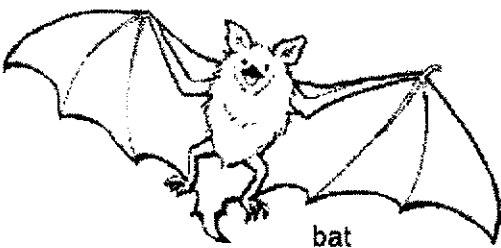
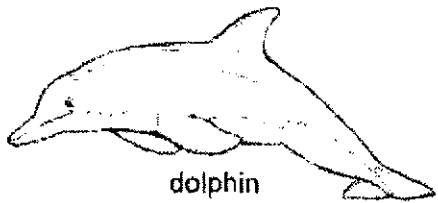
()

Total marks for section A	10
------------------------------	----

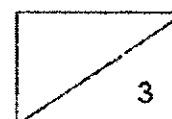
Section B: Structured questions (10m)

For questions 6 to 8, write your answers in the space provided. The number of marks available is shown in brackets [] at the end of each question or part question.

6 Study the classification table below.

P	Q
 penguin	 squirrel  bat  dolphin

- (a) The animal in group P reproduces by _____ but the animals in group Q reproduce by _____. [1m]
- (b) Wati regrouped the 4 animals based on **another** characteristic **observed** from the diagram. She moved the bat over to group P. Explain why. [1m]
-
- (c) Wati wanted to classify a frog into group Q based on its breathing method. Do you agree with her? Explain your answer. [1m]
-



- 7 Study the table below. A tick (✓) means the animal has that characteristic and a cross (×) means it does not have that characteristic.

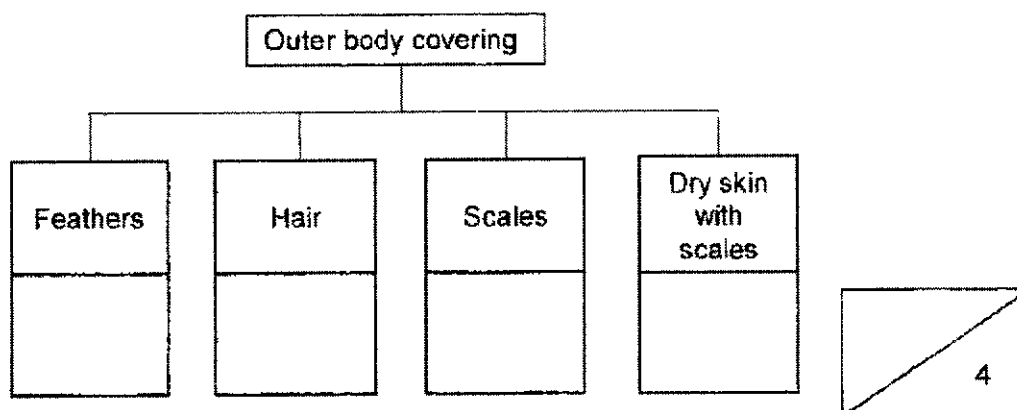
Animal	Lays eggs	Has a beak	Breathe through gills
A	✓	×	✓
B	✓	×	×
C	✓	✓	×
D	×	×	×

- (a) Based only on the information from the table, state a difference between animal B and C. [1m]

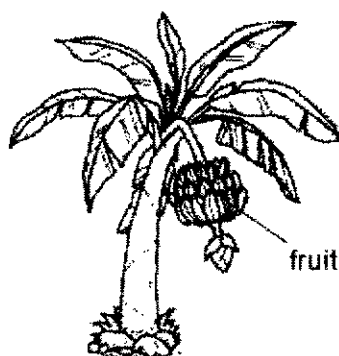
- (b) Based on the table above, place the letters, A, B, C and D, into the correct animal group. [2m]

Animal	Animal group
	fish
	birds
	reptiles
	mammals

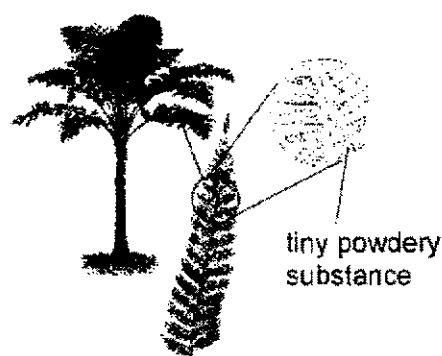
- (c) Meiling wanted to regroup the four animals based on their outer body covering. Place the letters, A, B, C and D, into the correct boxes below. [1m]



- 8 Study the pictures of the two plants below.



Banana plant



Tree Fern

- (a) Based on the diagrams above, state one observable **similarity** between the two plants. [1m]

- (b) Darren noticed that the tree fern has tiny powdery substances on the underside of the leaves shown in the diagram above. What are these substances? [1m]

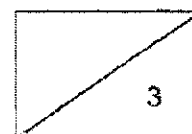
- (c) Match the two plants to the correct group. [1m]

Banana plant ●

● non-flowering plant

Tree fern ●

● flowering plant



- End of paper -

SCHOOL : NANHUA PRIMARY SCHOOL
LEVEL : PRIMARY 3
SUBJECT : SCIENCE
TERM : NHPS P3 Science Term 1 Weighted Assessment

SECTION A

[illegible]

SECTION B

Q6	<p>a) laying eggs; give birth</p> <p>b) both have wings</p> <p>c) Yes. Both breathe through lungs.</p> <p>Or No. A frog breathes through its moist skin in water but mammals do not.</p>																		
Q7	<p>a) Animal C has a beak but animal B does not have.</p> <p>b)</p> <table> <tr> <th>Animal</th><th>Animal Group</th></tr> <tr> <td>A</td><td>Fish</td></tr> <tr> <td>C</td><td>Birds</td></tr> <tr> <td>B</td><td>Reptiles</td></tr> <tr> <td>D</td><td>Mammals</td></tr> </table> <p>c)</p> <table> <tr> <th>Feathers</th><th>Hair</th><th>Scales</th><th>Dry skin with scales</th></tr> <tr> <td>C</td><td>D</td><td>A</td><td>B</td></tr> </table>	Animal	Animal Group	A	Fish	C	Birds	B	Reptiles	D	Mammals	Feathers	Hair	Scales	Dry skin with scales	C	D	A	B
Animal	Animal Group																		
A	Fish																		
C	Birds																		
B	Reptiles																		
D	Mammals																		
Feathers	Hair	Scales	Dry skin with scales																
C	D	A	B																
Q8	<p>a) Both have a stem/strong stem</p> <p>Both have leaves/branches</p> <p>b) They are spores / spore bags.</p> <p>c)</p> <div style="display: flex; justify-content: space-around; align-items: center;"> <div style="text-align: center;"> <p>Banana</p> <p>Tree fern</p> </div> <div style="text-align: center;"> <p>non-flowering plant</p> <p>flowering plant</p> </div> </div>																		

