



CHIJ TOA PAYOH (PRIMARY) 2022 WEIGHTED ASSESSMENT 2

NAME

REGISTER
NUMBER

CLASS

SCIENCE PAPER**Primary Three**
6 May 2022
30 minutes
INSTRUCTIONS TO CANDIDATES

1. Write your name, class and register number clearly above.
2. Do not turn over this page until you are told to do so.
3. Follow all instructions carefully.

SECTION	SUB-TOTAL	MARKS OBTAINED
A	10	
B	10	
TOTAL	20	

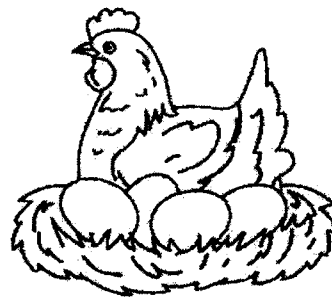
Parent's / Guardian's Signature: _____

 This document consists of [8] printed pages including cover page

Section A: Multiple Choice Questions (10 marks)

For each question from 1 to 5, four options are given. One of them is the correct answer. Make your choice (1, 2, 3 or 4) and write the answer in the bracket provided.

1. The pictures show some animals.



Which characteristic of living things is shown in the pictures?

- (1) Living things reproduce.
- (2) Living things respond to changes.
- (3) Living things need air, food and water.
- (4) Living things move from place to place by themselves.

()



2. The table shows Minah's answers to some questions about ferns.

Question		Answer
A	Can it reproduce?	Yes
B	Does it have seeds?	Yes
C	Does it have flowers?	No
D	Does it make its own food?	No

Which questions were answered correctly?

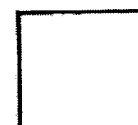
- (1) A and B only
- (2) A and C only
- (3) B and D only
- (4) C and D only

()

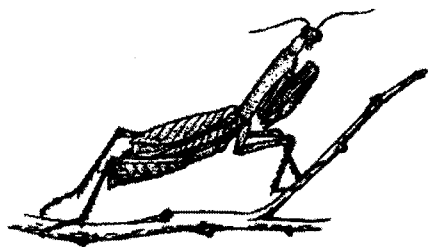
3. Which statement is true about bacteria?

- (1) They are fungi.
- (2) They can grow.
- (3) They can make their own food.
- (4) They can be seen without using the microscope.

()



4. Bob saw organisms X and Z in the garden. He wanted to find out if both organisms are insects.



organism X



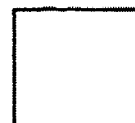
organism Z

Which of the following would help him to conclude whether the organisms are insects?

A	Count the number of legs.
B	Look for wings on the bodies.
C	Count the number of body parts.
D	Observe the type of food they eat.

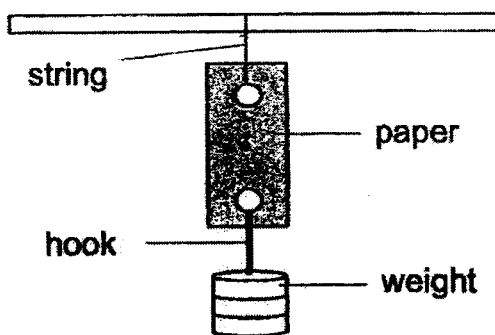
- (1) A and B only
- (2) A and C only
- (3) B and D only
- (4) C and D only

()



5

5. Mary wanted to find out the strength of three different types of papers, P, Q and R. The papers are of the same size.



She added one weight at a time to the hook until each paper started to tear. The results are as shown.

Type of paper	Number of weights
P	7
Q	4
R	6

Based on the results, arrange the three types of paper from the strongest to the weakest.

- (1) Q, R, P
- (2) Q, P, R
- (3) P, R, Q
- (4) P, Q, R

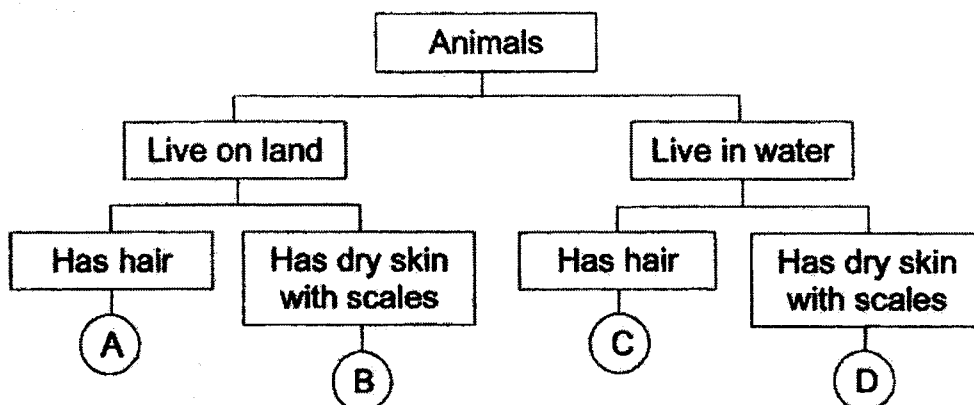
()



Section B: Open-Ended Questions (10 marks)

Write your answers for questions 6 to 8 in the spaces provided. The mark is shown in the bracket [] at the end of each question.

6. The diagram shows the classification of some animals based on their characteristics.



- (a) Based on the diagram, state one similar characteristic between animals A and B. [1]

- (b) Based on the diagram, state two different characteristics between animals B and C. [2]

Difference 1: _____

Difference 2: _____

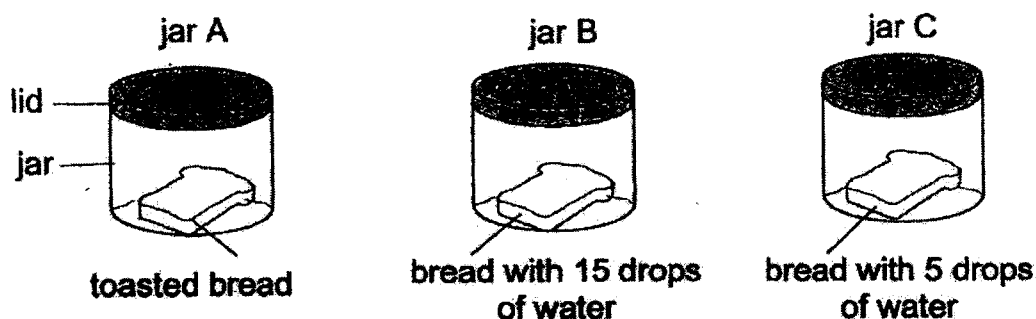
- (c) Circle the correct answer. [1]

Animals B and D are (amphibians / mammals / reptiles).

☐

7

7. Ken cut a loaf of bread into three pieces of the same size. He placed each piece into a jar with lid. The three identical jars were placed in the Science room.



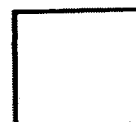
After a few days, Ken made the following observations.

Jar	Presence of mould on the bread
A	No
B	Yes
C	Yes

- (a) Give a reason why there was no mould growing on the bread in jar A. [1]

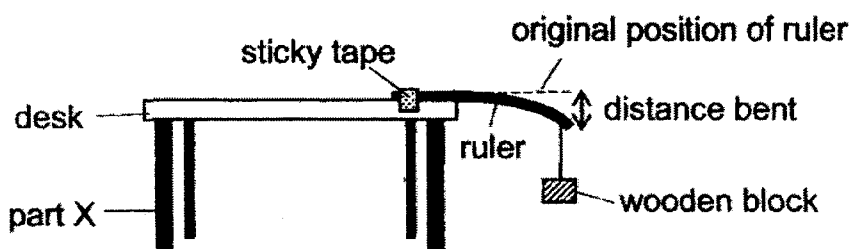
- (b) In which jar, B or C, was the bread likely to have more mould growing on it? Give a reason for your answer. [1]

- (c) Mould reproduces the same way as mushroom. How do both of them reproduce? [1]



8

8. Abby taped a ruler made of material A on the edge of a desk. When a wooden block was hung at one end of the ruler, the ruler bent as shown.



Abby repeated the experiment with two other rulers made of different materials B and C. She measured the distance bent by each ruler with the block hanging to it. The results are as shown.

Material	Distance the material bent (cm)
A	12
B	0
C	5

- (a) Circle the correct answer. [1]

Material A is (less / more) flexible than material C.

- (b) Which of the materials, A, B or C, should Abby use to make part X of the desk? Give a reason for your answer. [1]

- (c) Besides the property mentioned in (b), name another property of material that part X should have so that Abby could place a pile of heavy books on the desk. [1]

- End of Paper -

YEAR : 2022
 LEVEL : PRIMARY 3
 SCHOOL : CHIJ PRIMARY (TOA PAYOH)
 SUBJECT : SCIENCE
 TERM : WEIGHTED ASSESSMENT 2

Q1	1	Q2	2	Q3	2	Q4	2	Q5	3
----	---	----	---	----	---	----	---	----	---

Q6	(a)	Both animals A and B live on land.
	(b)	Difference 1: Animal C lives in water but animal B lives on land. Difference 2: Animal B has dry skin with scales but animal C has hair.
	(c)	*Circle* reptiles
Q7	(a)	There was no mould growing in the bread in jar A as there was no water for the mould to grow.
	(b)	B. There is more water for the mould to grow.
	(c)	They both reproduce by spores.
Q8	(a)	*Circle* more
	(b)	Material B. It cannot bend.
	(c)	Strength

3
 END

