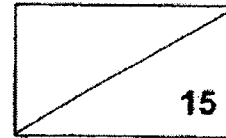


NANYANG PRIMARY SCHOOL
Term 1 Weighted Assessment
Science
Primary 3



Name: _____ () Date: _____

Class: 3 _____ Parent's signature: _____









Dear Parent/Guardian,

Please sign the Weighted Assessment paper and have your child/ward return it the next day. Any query should be raised at the same time when returning the paper.

Section A: Multiple Choice Questions (10 marks)

For each question from 1 to 5, four options (1, 2, 3 and 4) are given. One of them is the correct answer. Indicate your choice in the brackets provided.

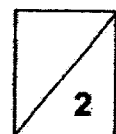
1. Study the following things in Group X and Group Y.

Group X		Group Y	
			
grass	millipede	teddy bear	hamburger
			
monkey	hibiscus plant	car	school bag

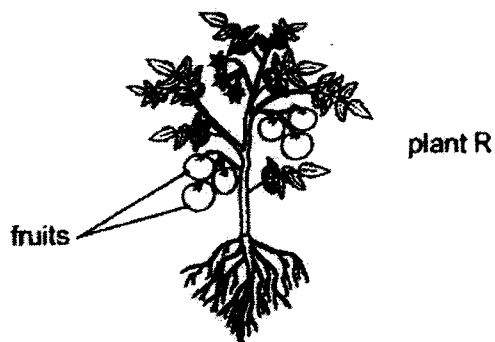
Which one of the following describes the things in the two groups incorrectly?

	Group X	Group Y
(1)	Can grow	Cannot grow
(2)	Can reproduce	Cannot reproduce
(3)	Respond to changes around them	Do not respond to changes around them
(4)	Do not need air, food and water to stay alive	Need air, food and water to stay alive

()



2. Emily found plant R in her garden. Plant R has fruits growing on it as shown in the diagram below.



From her observation, which of the following statements about plant R are correct?

- A It is an adult plant.
- B It is a young plant.
- C It is a flowering plant.
- D It is a non-flowering plant.

(1) A and C only

(2) A and D only

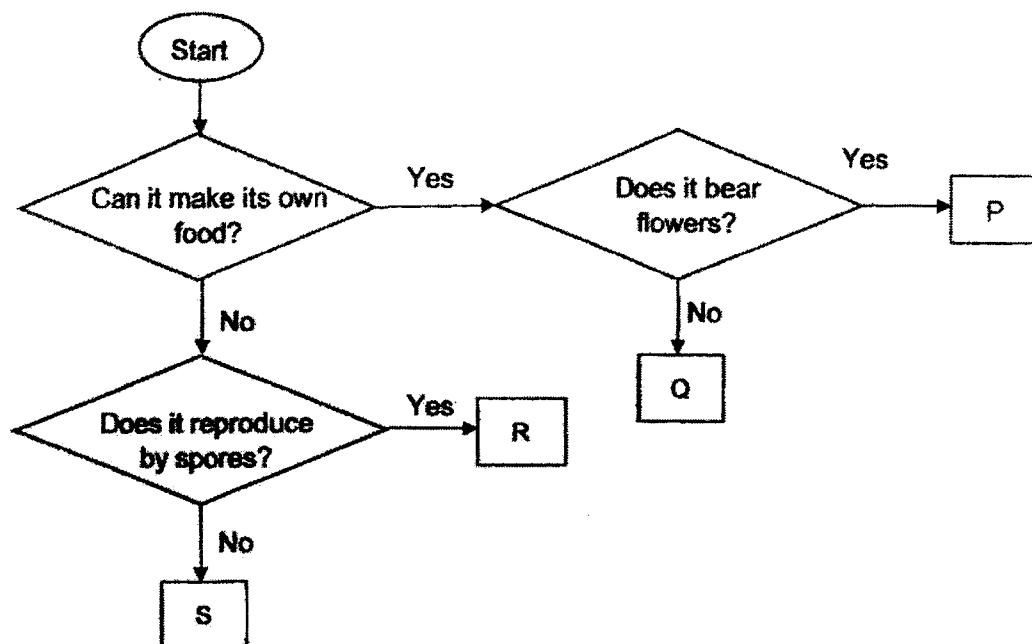
(3) B and C only

(4) B and D only

()



3. Study the flowchart below.



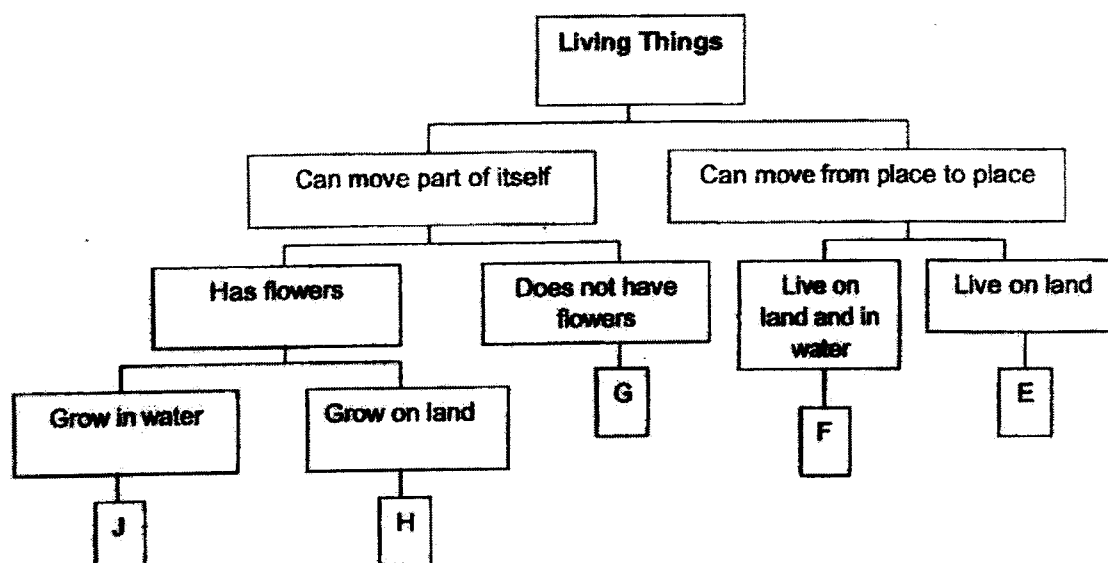
Based on the flowchart above, which one of the following statement is correct?

- (1) Q can bear fruits.
- (2) P is a flowering plant.
- (3) P, R and S are not plants.
- (4) Q and S reproduce by seeds.

()



4. The diagram below shows a classification chart of some living things.



Which one of the following statements is correct?

- (1) G is not a plant.
- (2) Only F is an amphibian.
- (3) Only H and J are plants.
- (4) E can make its own food.

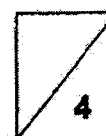
()

5. Meng Ho found animal S near a pond and observed it for a few days.

Which one of the following observations will help him conclude that animal S is definitely an amphibian?

- (1) Animal S lays eggs.
- (2) Animal S can swim.
- (3) Animal S has moist skin.
- (4) Animal S eats only animals.





()



Section B: Open-Ended Questions (5 marks)

For questions 6 and 7, fill in your answers in the spaces provided.

6. The classification table below shows how 4 different plants were classified.

Group A		Group B	
			
bird's nest fern	ladder fern	rose plant	banana tree

- (a) Give a suitable heading for each of the 2 groups of plants.

[1]

Group A : _____

Group B : _____

- (b) Write down a similar characteristic of living things between the ladder fern and the rose plant.

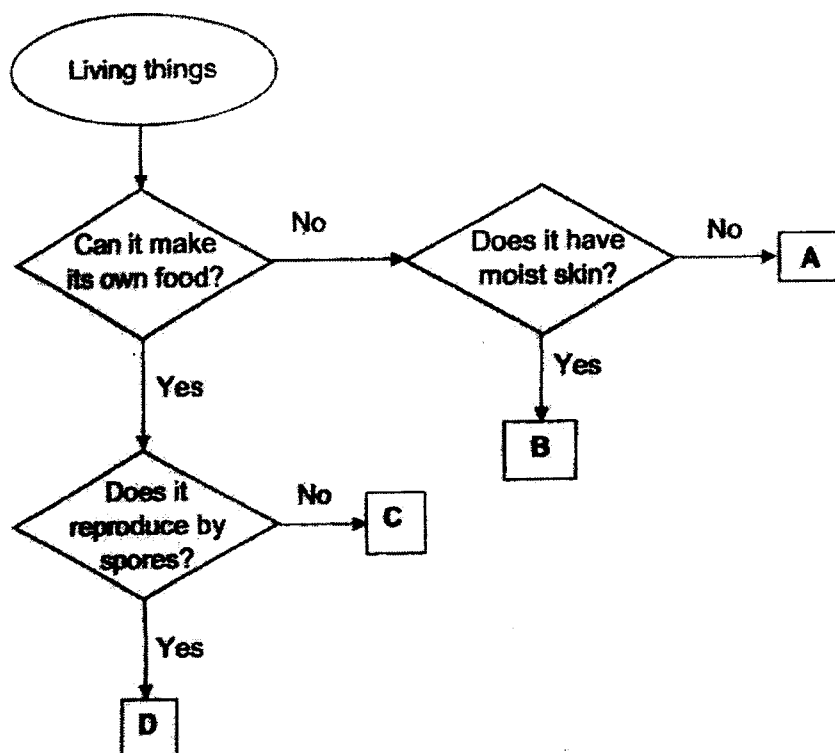
[1]

- (c) Other than the headings used in (a), what is **another** difference between the plants in Group A and Group B?

[1]



7. Study the flowchart below.



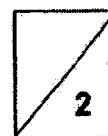
(a) Give an example of living thing D.

[1]

(b) Based on the flowchart above, state a difference between living thing B and living thing C.

[1]

- End of Paper -



Nanyang Primary School
P3 SCIENCE WA1 2022
Simplified Answer Key

Section A

1	4
2	1
3	2
4	2
5	3

Section B

Qn No	Acceptable Answers
6.	
(a)	Group A : Non-Flowering Plants Group B : Flowering Plants
(b)	Both ladder fern and the rose plants can grow.
(c)	Plants in group A reproduce by spores <u>but</u> plants in Group B reproduce by seeds.
7.	
(a)	Bird's nest fern
(b)	Living thing C can make its own food <u>but</u> living thing B cannot make its own food.

