

**Catholic High School (Primary)**  
**Primary 3 Science 2022**  
**Weighted Assessment 2**

Name: \_\_\_\_\_ (    )

Class: Pri 3 \_\_\_\_\_

|       |    |
|-------|----|
| MARKS | 20 |
|-------|----|

Date: 27 April 2022

Parent's Signature: \_\_\_\_\_

**Section A (6 × 2 marks)**

For each question from 1 to 6, four options are given. One of them is the correct answer. Make your choice (1, 2, 3 or 4). Write your answer in the brackets provided.

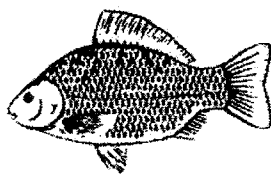
- 1 Which observation correctly matches the characteristic of living things?

|     | Observation                                                      | Characteristic                          |
|-----|------------------------------------------------------------------|-----------------------------------------|
| (1) | A frog lays eggs.                                                | Living things can grow.                 |
| (2) | A caterpillar changes into a butterfly.                          | Living things need air, food and water. |
| (3) | A boy moves his foot away from a sharp object he had stepped on. | Living things can reproduce.            |
| (4) | A monkey swings from tree to tree.                               | Living things can move on its own.      |

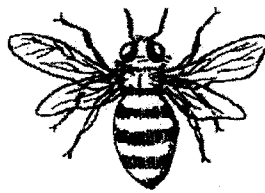
(    )



2 The diagrams below show two animals.



fish



insect

Which is a common characteristic of a fish and an insect?

- (1) Both lay eggs.
- (2) Both have six legs.
- (3) Both live on land only.
- (4) Both have scales on their body.

( )

3 The table below shows the characteristics of two groups of animals.  
A tick (✓) represents that the animal has the characteristic.

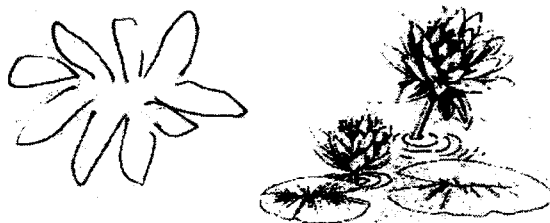
| Characteristics           | Group S | Group T |
|---------------------------|---------|---------|
| lives in water only       |         | ✓       |
| has dry skin              | ✓       |         |
| reproduces by laying eggs | ✓       | ✓       |
| has scales                | ✓       | ✓       |

Which of the following best represents Groups S and T?

|     | Group S   | Group T   |
|-----|-----------|-----------|
| (1) | bat       | whale     |
| (2) | crocodile | goldfish  |
| (3) | whale     | crocodile |
| (4) | crocodile | bat       |

( )

- 4 The diagram below shows a plant found in a pond.

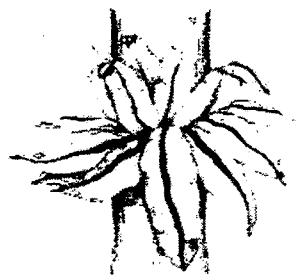
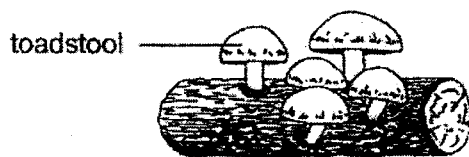


Which set of characteristics below best represents the above plant?

| Characteristics |            |                    |               |
|-----------------|------------|--------------------|---------------|
|                 | has flower | makes its own food | grows on land |
| (1)             | ✓          | ✓                  | ✓             |
| (2)             |            | ✓                  |               |
| (3)             | ✓          | ✓                  |               |
| (4)             |            |                    | ✓             |

( )

5 Study the diagrams:



bird's nest fern

Which statement(s) about the living things is/are **not** correct?

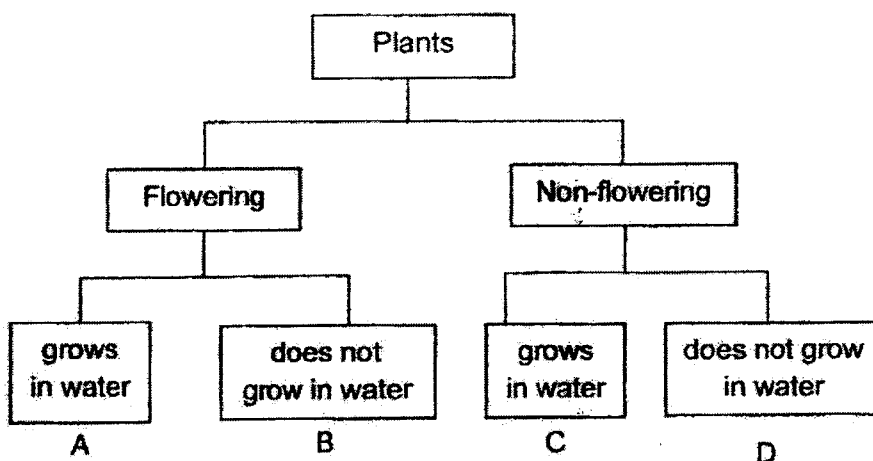
- A Both have flowers.
- B Both reproduce from spores.
- C Both cannot make their own food.

- (1) B only
- (2) C only
- (3) A and B only
- (4) A and C only

( )

- 6 The table below contains some information on two plants X and Y.

| Characteristics | Plant X | Plant Y |
|-----------------|---------|---------|
| bears flowers   | ✓       |         |
| grows on land   |         | ✓       |



From the information given in the table above, where would you classify plants X and Y in the diagram?

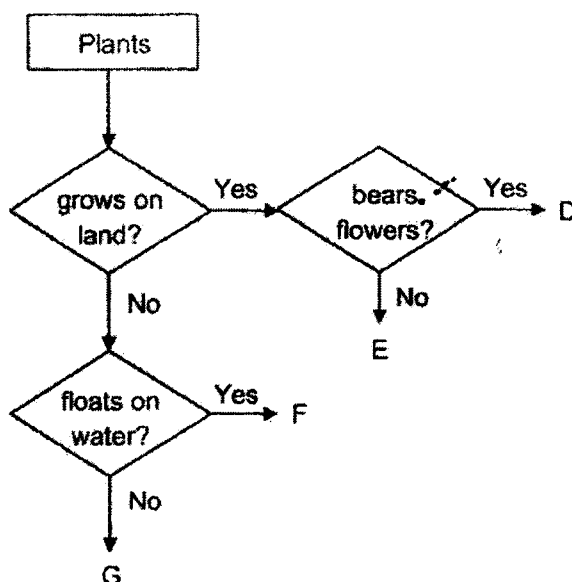
|     | Plant X | Plant Y |     |
|-----|---------|---------|-----|
| (1) | A       | C       |     |
| (2) | A       | D       |     |
| (3) | B       | C       |     |
| (4) | B       | D       | ( ) |

**Section B (8 marks)**

For questions 7 to 9, write your answers in this space provided.

The number of marks available is shown in brackets [ ] at the end of each question or part question. (8 marks)

7 Study the diagram.



(a) State a similarity between plants F and G.

[1]

---



---

(b) State a difference between plants D and E.

[1]

---

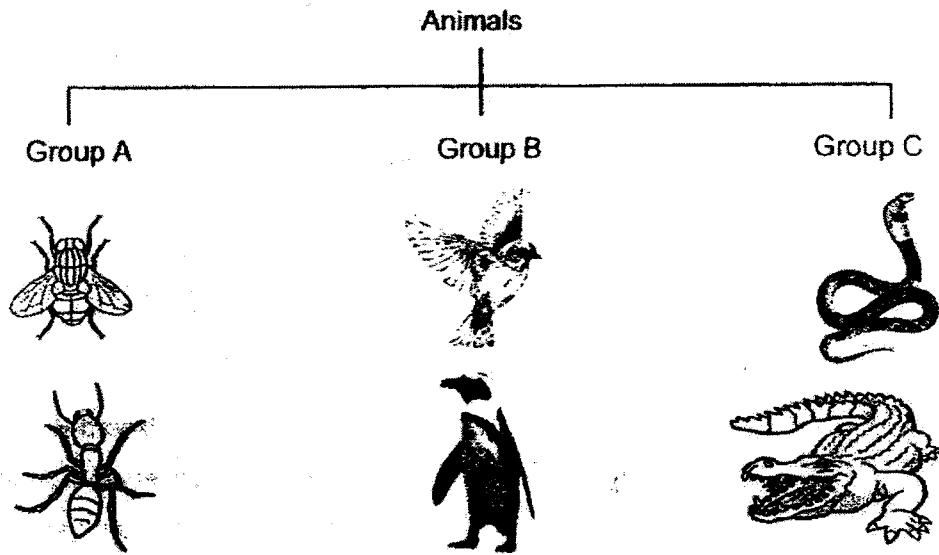


---

(Go on to the next page)

|       |   |
|-------|---|
| SCORE | 2 |
|-------|---|

8 Study the groups of animals.



(a) Name the group of animals for Group A and Group B. [1]

Group A: \_\_\_\_\_

Group B: \_\_\_\_\_

(b) Based on the diagram, state one main characteristic of the animals in Group C that is not a characteristic of animals in Groups A and B. [1]

---



---

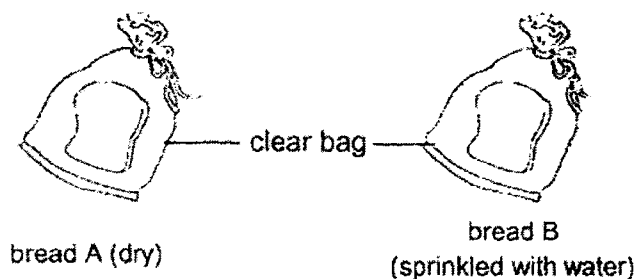
(c) Write "T" for true and "F" for false in the boxes. [2]

|      |                                           |  |
|------|-------------------------------------------|--|
| i.   | Birds are the only animals with feathers. |  |
| ii.  | Amphibians live on land.                  |  |
| iii. | Mammals produce milk for their young.     |  |
| iv.  | Only insects lay eggs.                    |  |

(Go on to the next page)

|       |   |
|-------|---|
| SCORE | 4 |
|-------|---|

- 9 Amanda carried out an experiment using two pieces of bread A and B. They were placed on a table in the same room.



She recorded her observations for 7 days in the table below.

| Day | bread A              | bread B              |
|-----|----------------------|----------------------|
| 2   | no observable change | no observable change |
| 4   | no observable change | a few dark spots     |
| 7   | no observable change | more dark spots      |

She observed that the dark spots on bread B were mould.

- (a) Which group of living things does mould belong to? [1]

---

- (b) What should Amanda keep the same in this experiment?  
Put a tick (✓) in the correct box. [1]

|                   | Tick (✓) |
|-------------------|----------|
| type of bread     |          |
| presence of water |          |
| type of clear bag |          |

|       |   |
|-------|---|
| SCORE | 2 |
|-------|---|

End of Paper



## ANSWER KEY

YEAR : 2022  
 LEVEL : PRIMARY 3  
 SCHOOL : CATHOLIC HIGH SCHOOL (PRIMARY)  
 SUBJECT : SCIENCE  
 TERM : WA2

### BOOKLET A

|    |   |    |   |    |   |    |   |    |   |
|----|---|----|---|----|---|----|---|----|---|
| Q1 | 4 | Q2 | 1 | Q3 | 2 | Q4 | 3 | Q5 | 4 |
| Q6 | 2 |    |   |    |   |    |   |    |   |

### BOOKLET B

|      |                                                            |          |  |
|------|------------------------------------------------------------|----------|--|
| Q7a) | They both do not grow on land.                             |          |  |
| Q7b) | Plant D bears flowers while plant E does not bear flowers. |          |  |
| Q8a) | Group A: Insects<br>Group B: Birds                         |          |  |
| Q8b) | Group C has dry skin with scales.                          |          |  |
| Q8c) | i) T<br>ii) F<br>iii) T<br>iv) F                           |          |  |
| Q9a) | Fungi                                                      |          |  |
| Q9b) |                                                            | Tick (✓) |  |
|      | Type of bread                                              | ✓        |  |
|      | Presence of water                                          |          |  |
|      | Type of clear bag                                          | ✓        |  |

