

Catholic High School (Primary)
Primary 3 Science 2022
Weighted Assessment 3

Name: _____ ()

Class: Pri 3 _____

MARKS	20
-------	----

Date: 3rd August 2022

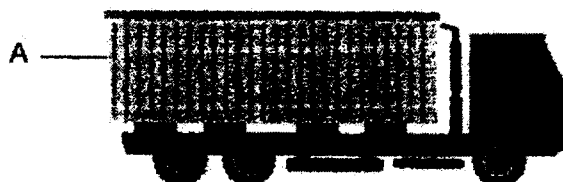
Parent's Signature: _____

Section A (6 × 2 marks)

For each question from 1 to 6, four options are given. One of them is the correct answer. Make your choice (1, 2, 3 or 4). Write your answer in the brackets provided.

- 1 A container truck is used to transport heavy objects.

What are the properties of the material used to make part A of the container?



Key

✓ : yes

x : no

	Property	
	flexible	strong
(1)	✓	x
(2)	x	✓
(3)	x	x
(4)	✓	✓

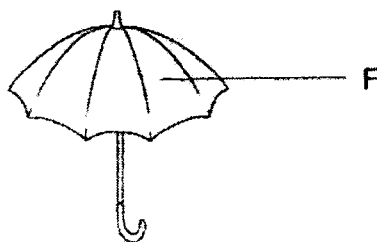
()

- 2 Which is **not** a function of the skeletal system?

- (1) to take in oxygen
- (2) to protect the brain
- (3) to support the body
- (4) to protect the lungs

()

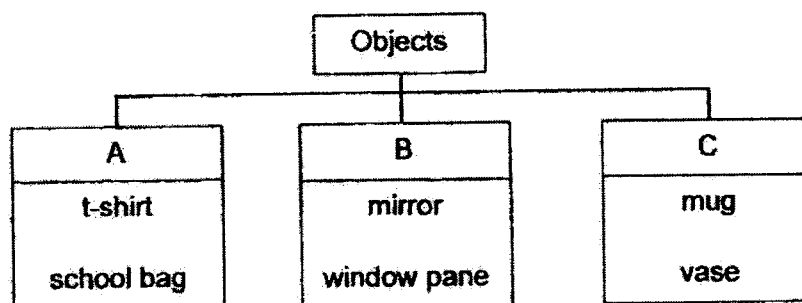
- 3 What material is part F of the umbrella most likely made of?



- (1) wood
(2) glass
(3) metal
(4) plastic

()

- 4 The objects are grouped according to the type of materials they are made of.

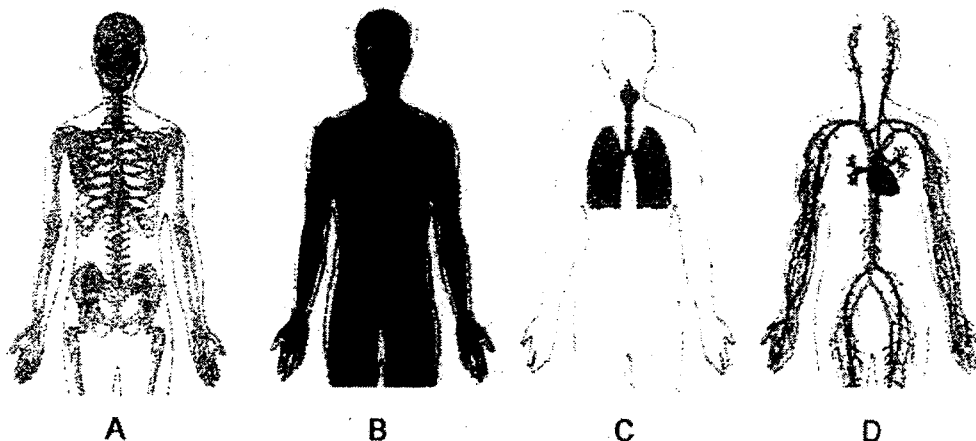


Which of the following correctly shows A, B and C?

	A	B	C
(1)	rubber	metal	glass
(2)	fabric	glass	ceramic
(3)	rubber	glass	metal
(4)	fabric	ceramic	rubber

()

5 Study the four organ systems.

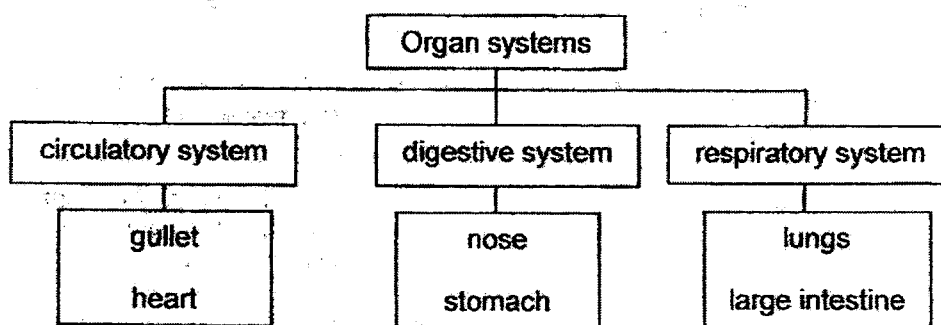


Which organ systems help Brandon to breathe faster and his heart to beat faster during a swim?

- (1) A and B
- (2) A and D
- (3) B and C
- (4) C and D

()

6 Study the diagram.



Which organs are **not** grouped correctly?

- (1) lungs, gullet, nose
- (2) lungs, stomach, heart
- (3) gullet, nose, large intestine
- (4) heart, stomach, large intestine

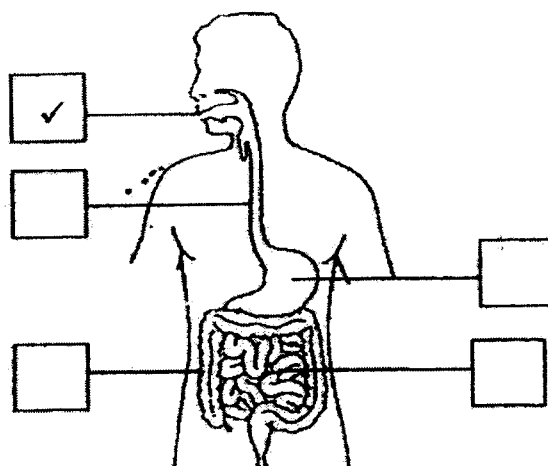
()

Section B (8 marks)

For questions 7 to 9, write your answers in this space provided.

The number of marks available is shown in brackets [] at the end of each question or part question. (8 marks)

- 7 The diagram shows the human digestive system.

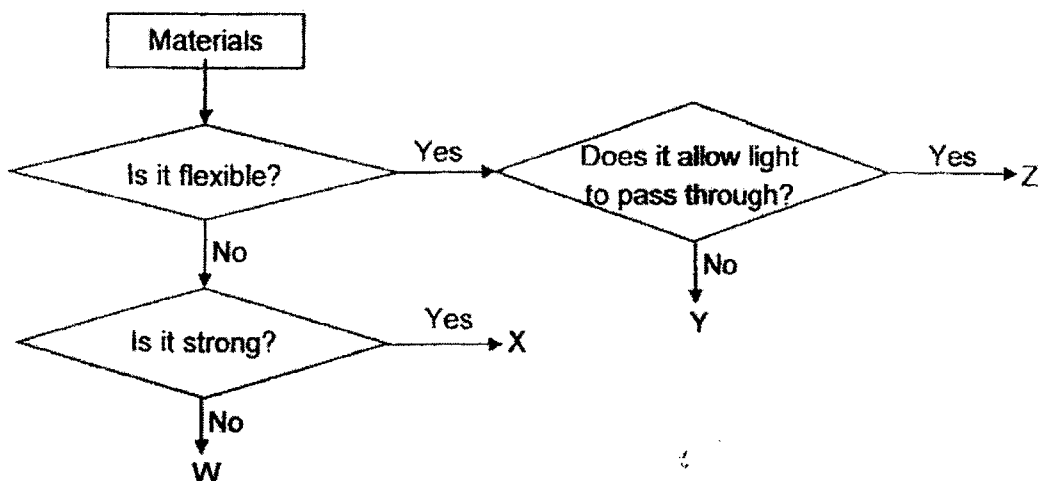


- (a) Put a tick (✓) in the box(es) where digestive juices are added. The first one has been done for you. [1]
- (b) Draw a line to match each organ to its function. [1]

Organ		Function
large intestine	• ————— •	Water is removed from the undigested food.
mouth	•	• The digested food passes through the walls into the blood.
small intestine	•	• Digestion starts. Food is chewed and mixed with saliva.

SCORE	2
-------	---

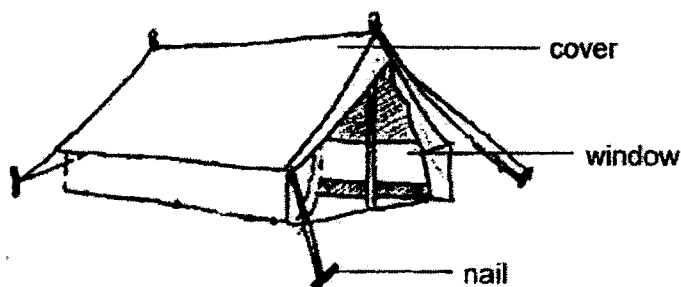
8 The diagram shows the properties of materials W, X, Y and Z.



(a) State one similarity between materials Y and Z. [1]

(b) State the properties of material W. [1]

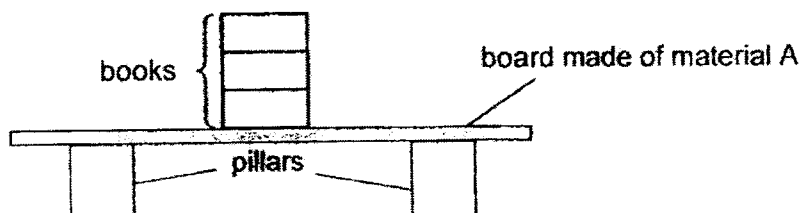
The diagram shows an outdoor tent.



(c) Write "T" for true and "F" for false in the boxes. [1]

i.	Material X can be used to make the nail.	
ii.	Material Z can be used to make the window.	

- 9 Paul placed a board made of material A over two pillars. Next, he stacked similar books, one at a time, on the board until it broke. He repeated the experiment using boards made of materials B and C.



His results are shown in the table.

Material of board	Number of books the board could hold before it broke
A	3
B	10
C	16

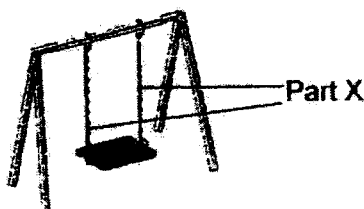
- (a) Which property of the materials was Paul trying to find out?
Put a tick (✓) in the correct box.

[1]

	Tick (✓)
flexibility	
strength	
transparency	

- (b) Which material A, B or C is most suitable to make part X of a swing?
Explain why.

[2]



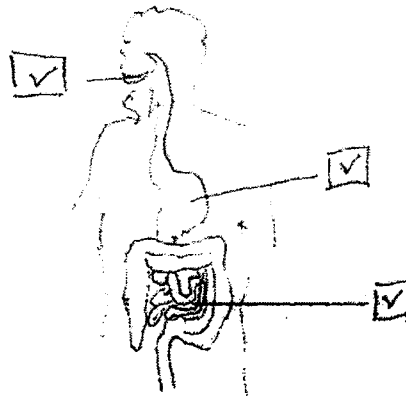
End of Paper

SCORE	3
-------	---

Weighted Assessment 3

a1. 2 a2. 1 a3. 4 a4. 2 a5. 4 a6. 3

a7(a)



- a7. b. large intestine — water is removed from the undigested food.
 mouth — Digestion starts. Food is chewed and mixed with saliva.
 small intestine — The digested food passes through the walls into the blood.

a8(a) Y and Z are flexible.

(b). W is not strong and not flexible.

(c) i. T

(c) ii. T.

a9. (a) strength

(b). C

Material C because C could hold the most number of books so C is the strongest.

Z
END

