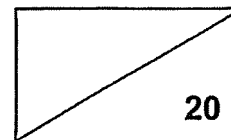


NANYANG PRIMARY SCHOOL
Term 1 Weighted Assessment
Science
Primary 5



Name: _____ () Date: _____

Class: 5 _____ Parent's signature: _____

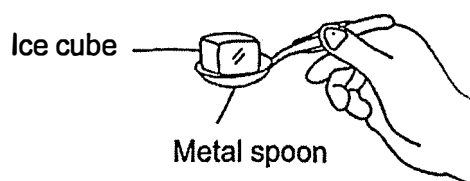
Dear Parent/Guardian,

Please sign the Weighted Assessment paper and have your child/ward return it the next day. Any query should be raised at the same time when returning the paper.

Section A: Multiple Choice Questions (12 marks)

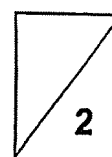
For each question from 1 to 6, four options (1, 2, 3 and 4) are given. One of them is the correct answer. Indicate your choice in the brackets provided.

1. Mark placed an ice cube onto a metal spoon as shown in the diagram below. After some time, he noticed that the ice cube had melted and the metal spoon felt cold.



Which of the following statements correctly explains why Mark felt that the metal spoon was cold?

- (1) The metal spoon lost heat to his fingers and the ice cube.
 - (2) The metal spoon gained heat from the ice cube and his fingers.
 - (3) The metal spoon gained heat from his fingers and lost heat to the ice cube.
 - (4) The metal spoon lost heat to his fingers and gained heat from the ice cube
- ()



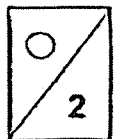
2. The table below shows the characteristics of Nadia and her parents.

Characteristics	Nadia's father	Nadia's mother	Nadia
Presence of dimples	Has dimples	No dimples	Has dimples
Length of hair	Short	Short	Short
Type of eyelid	Double	Single	Double
Type of earlobe	Attached	Detached	Detached

How many characteristics was/were passed down from Nadia's mother to Nadia?

- (1) 1
- (2) 2
- (3) 3
- (4) 4

()

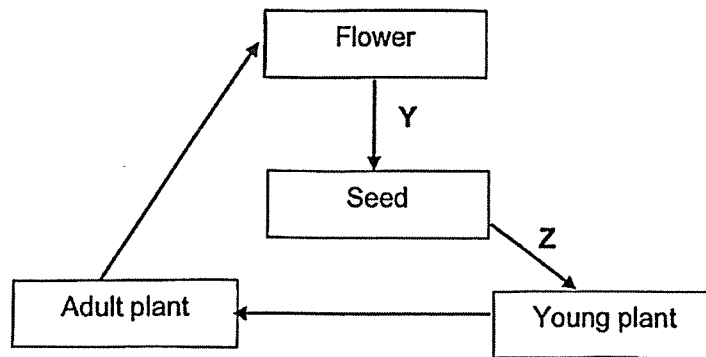


3. Why is sexual reproduction in living things important?

- A: It ensures continuity of their own kind.
- B: It ensures the number of living things will decrease.
- C: It ensures that all observable characteristics are passed on from parents to young.

- (1) C only
- (2) A only
- (3) A and B only
- (4) A, B and C only ()

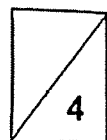
4. A plant undergoes processes Y and Z, as shown in the diagram below.



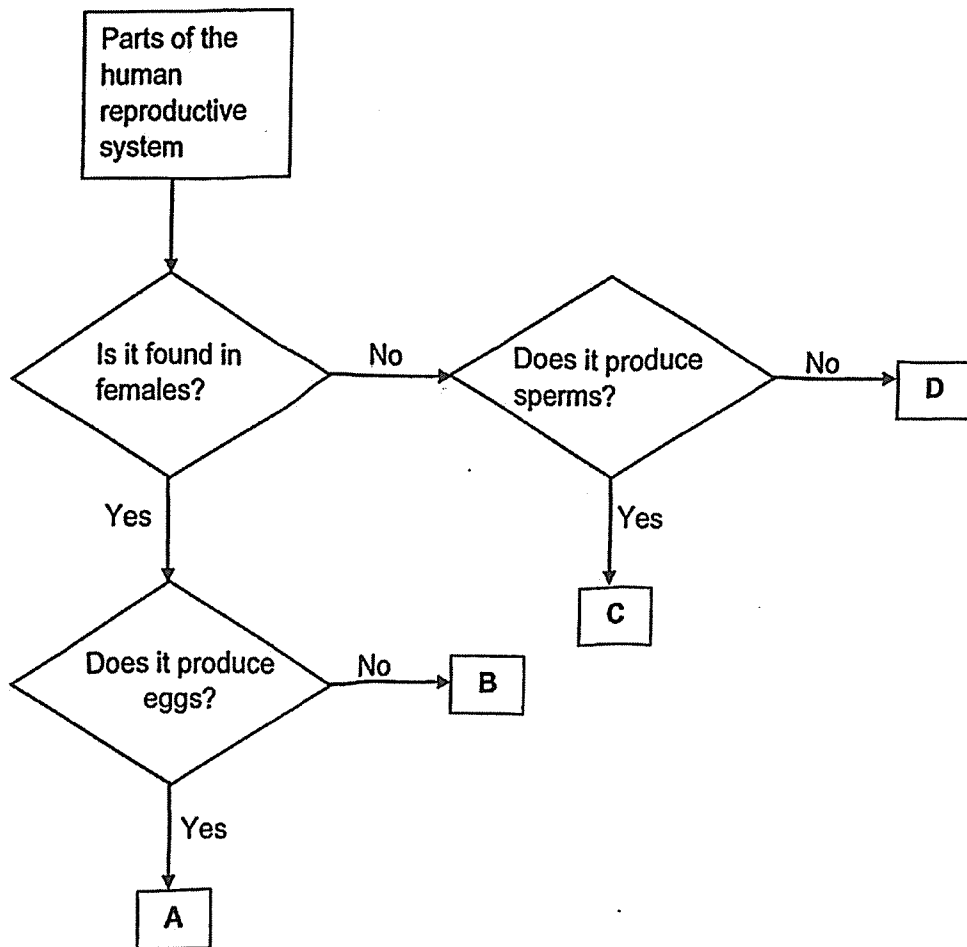
Which of the following correctly represents processes Y and Z?

	Y	Z
(1)	Dispersal	Fertilisation
(2)	Pollination	Fertilisation
(3)	Dispersal	Germination
(4)	Fertilisation	Germination

()



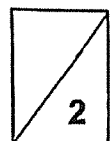
5. Study the flowchart below.



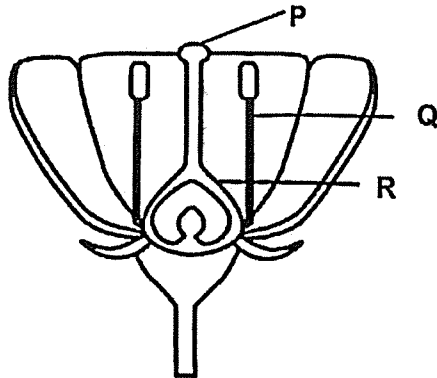
Which of the following correctly identifies organs A, B, C and D?

	A	B	C	D
(1)	Ovary	Womb	Penis	Testis
(2)	Ovary	Womb	Testis	Penis
(3)	Womb	Ovary	Testis	Penis
(4)	Womb	Ovary	Testis	Penis

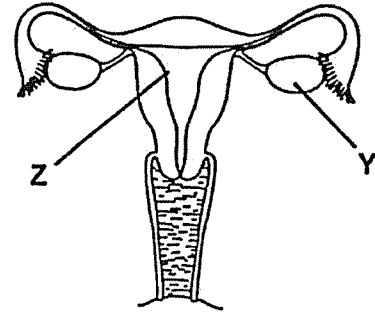
()



6. The diagram below shows the reproductive parts of a flower and a human.



Reproductive parts of a flower

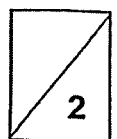


Reproductive parts of a human

Which one of the following statements about the reproductive parts of a flower and a human is true?

- (1) Pollination occurs at parts Z and Q.
- (2) Parts P and Part Y have similar functions.
- (3) Part Y and Part Q contain the female reproductive cells.
- (4) Part R develops into a fruit and Part Z is where the foetus develops.

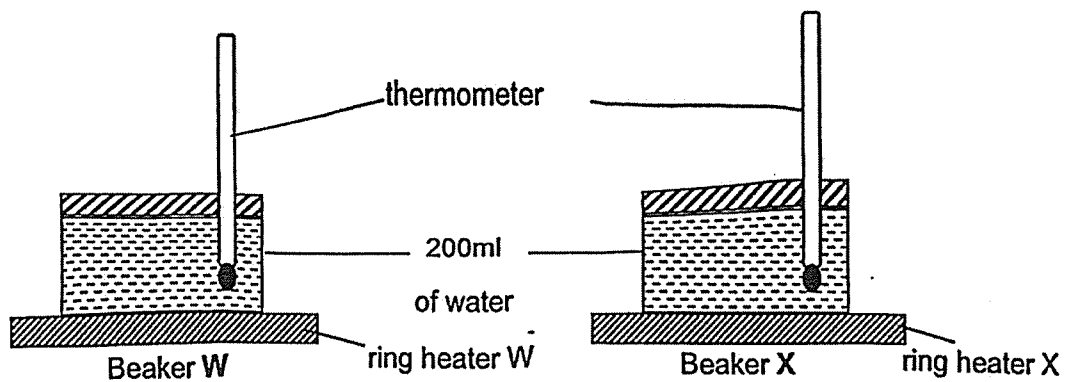
()



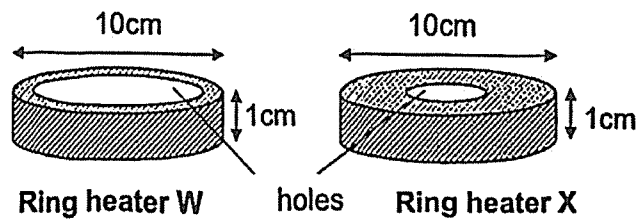
Section B: Open-Ended Questions (8 marks)

For questions 7 and 8, fill in your answers in the spaces provided.

7. Jia Le placed two similar beakers, W and X, containing 200ml of water on steel ring heaters, W and X, as shown below. The water was heated continuously for 15 minutes by the heaters to the same temperature.



The diagrams below show the top view of steel ring heaters, W and X.

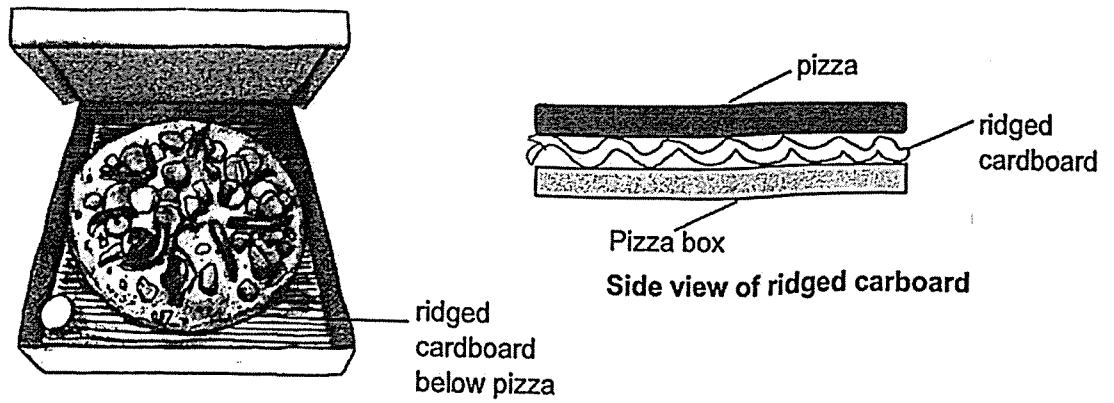


- (a) Give a reason why using heaters of the same material help to ensure a fair test. [1]

- (b) Jia Le observed that the water in beaker X boiled first. Explain Jia Le's observation. [2]

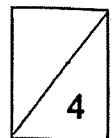
(Go on to the next page)

Jia Le ordered a box of pizza. He noticed a ridged cardboard placed at the bottom of the pizza as shown in the diagram below.

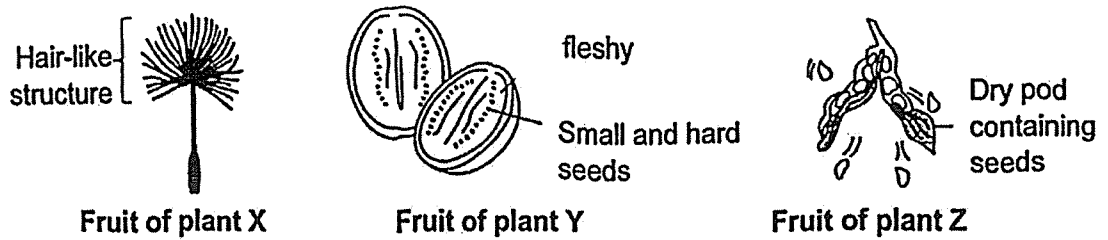


Jia Le's mother told him that the ridged cardboard helps to keep the pizza warm longer.

(c) Give a reason why the use of the ridged cardboard helps to keep the pizza warmer longer. [1]



8. The diagram below shows the fruits of the plants X, Y and Z.

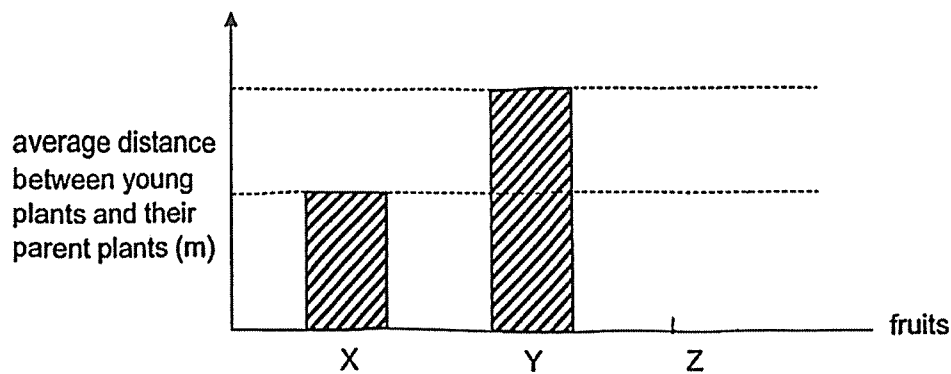


(a) Identify the method of seed dispersal for plant X and Y. [1]

X: _____

Y: _____

(b) The graph below shows the average distance between the locations of the young plants of X, Y and Z, and their parent plants. The graphs of fruits X and Y has been drawn for you.



(i) In the graph above, complete the bar graph by drawing the average distance between young plants of Z and their parent plants. [1]

(ii) Explain the answer for (b) (i) based on the characteristics of the fruit of Z. [2]

- End of Paper -

SCHOOL : NANYANG PRIMARY SCHOOL
LEVEL : PRIMARY 5
SUBJECT : SCIENCE
TERM : 2025 WEIGHTED ASSESSMENT 1

Q1	Q2	Q3	Q4	Q5	Q6				
3	1	2	3	2	4				

7(a)	To ensure that the time taken for the water to boil is only affected by the surface area in contact with the beaker and not other factors.
7(b)	Beaker X had a larger surface area in contact with heater X than beaker W so more heat is conducted to the water from the heater. Hence the water in beaker X boiled faster.
7(c)	The ridged cardboard helps to reduce contact between the pizza and the cardboard and hence heat transfer from the pizza to the cardboard is slower and the pizza stays warmer longer.
8(a)	X: Wind Y: Animal
8(b)	<p>average distance between young plants and their parent plants (m)</p> <p>fruits</p> <p>X Y Z</p>
8(bii)	Fruit of Z is pod-like and the seeds are scattered closest to the parent plant and will not be dispersed as far as fruits of X and Y

