



Nan Hua Primary School
Primary 4 Science
Term 1 Weighted Assessment 2025

| Marks | |
|------------|-----|
| Section A: | /10 |
| Section B: | /10 |
| Total: | /20 |

Name: _____ ()

Class: Primary 4S _____

Date: _____

Duration: 30 minutes

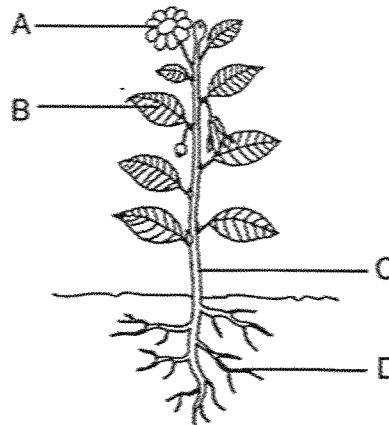
Parent's Signature _____

Answer all questions.

Section A: (5 x 2 marks = 10 marks)

For each question from 1 to 5, four options are given. One of them is the correct answer. Make your choice (1, 2, 3 or 4) and write your answer in the brackets provided.

1 The diagram below shows a plant.



Which part helps the plant to make food?

- (1) A
- (2) B
- (3) C
- (4) D

()

- 2 Diana wanted to carry out an experiment to find out if the amount of water given to a plant will affect its growth. She listed some of the variables of the experiment below.

- J Type of plant
- K Amount of water given to each plant
- L Amount of light given to each plant
- M Height of each plant at the end of the experiment

Which of the variables should she keep the same to ensure that the experiment is fair?

- (1) K only
 - (2) J and L only
 - (3) K and M only
 - (4) J, L and M only
- 3 The table below shows how some parts of the human body are classified.

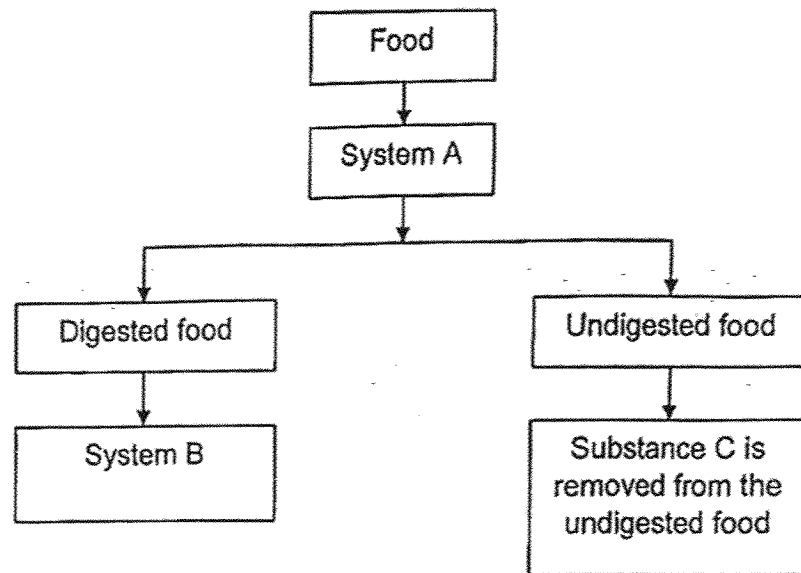
| Circulatory System | Muscular System | Skeletal System |
|--------------------|-----------------|-----------------|
| heart | muscles | windpipe |
| blood vessels | | skull |

Which part is placed in the wrong group?

- (1) skull
 - (2) heart
 - (3) windpipe
 - (4) blood vessels
- 4 Which of the following represents the function(s) of the stomach?

| | Digest food | Absorb digested food into blood | Transport digested food to other parts of the body |
|-----|-------------|---------------------------------|----------------------------------------------------|
| (1) | X | X | ✓ |
| (2) | ✓ | X | ✓ |
| (3) | ✓ | X | X |
| (4) | X | ✓ | X |

- 5 The diagram below shows what happens to the food we eat when it enters our body.



Which statement(s) is/are true?

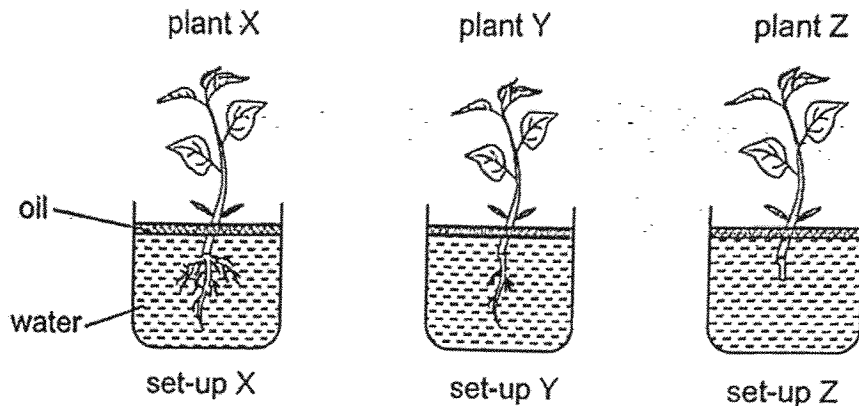
- P Substance C is water.
 - Q All food that enters system A will be absorbed.
 - R Digested food enters system B through the walls of the large intestine.
- (1) P only
(2) P and Q only
(3) Q and R only
(4) None of the above
- ()

(Go on to the next page)

Section B: Structured questions (10 marks)

For questions 6 to 8, write your answers in the space provided. The number of marks available is shown in brackets [] at the end of each question or part question.

- 6 Devi carried out an experiment with three similar plants, X, Y and Z, in a well-lit room. She removed some roots from plant Y and all the roots from plant Z.



After one day, Devi measured the amount of water left in each set-up and recorded the results in the table below.

| Set-up | Amount of water given (mℓ) | Amount of water left (mℓ) |
|--------|----------------------------|---------------------------|
| X | 500 | 360 |
| Y | 500 | 420 |
| Z | 500 | 480 |

- (a) What is the aim of the experiment? [1]

- (b) Which plant took in the most amount of water? Explain why. [1]

- (c) Devi planted plant Z in the soil of her garden. After a heavy rain, plant Z was washed away. Explain why. [1]

| | |
|-------|---|
| Score | 3 |
|-------|---|

7 (a) Name the part(s) of the human respiratory system [1]

(b) State the function of the human respiratory system. [1]

(c) Name the human system that carries substances around the body. [1]

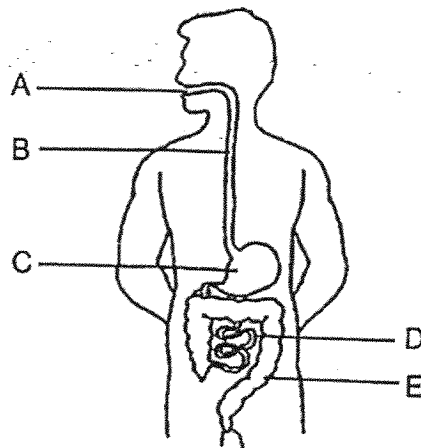
(Go on to the next page)

| | |
|-------|---------------------------------------------------------------------------------------|
| Score |  |
|-------|---------------------------------------------------------------------------------------|

8 (a) State what digestion is.

[1]

The diagram below shows the human digestive system.

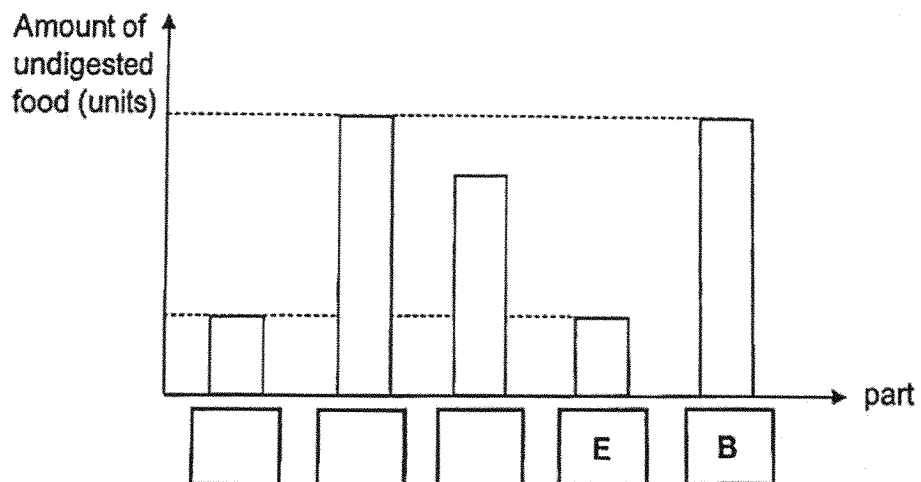


The graph below shows the amount of undigested food leaving each part A, B, C, D and E after a meal.

Parts B and E have been labelled.

(b) Fill in the remaining boxes with parts A, C and D.

[1]



- (c) Jane's mother advised her to chew her food more times before swallowing. Explain how that will help in the digestion of the food. [2]

End of paper

| | |
|-------|---|
| Score | 4 |
|-------|---|

SCHOOL : NAN HUA PRIMARY SCHOOL
LEVEL : PRIMARY 4
SUBJECT : SCIENCE
TERM : 2025 WEIGHTED ASSESSMENT 1

| | |
|----|------------------------------------------------------------------------------------------------------------------------------------------------------------------------------------------------------------------|
| 1 | 2 |
| 2 | 2 |
| 3 | 3 |
| 4 | 3 |
| 5 | 1 |
| 6a | To find out if the amount / number of roots will affect the amount / volume of water taken in by the plant. |
| 6b | Plant X. [Choice] The amount of water left is the least. [Evidence from the results in the table] It has the most amount / number of roots. [Concept] Thus, it took in the most amount of water. [Link] |
| 6c | Plant Z has no roots to anchor itself to the soil / ground. |
| 7a | Nose, windpipe, lungs |
| 7b | It is to exchange gases with the surroundings. |
| 7c | Circulatory system |
| 8a | Digestion is the process of breaking down the food into simpler / simple substances. |
| 8b | D, A, C |
| 8c | Food is broken down into smaller pieces. There is more surface (area) of the food in contact with / touching the digestive juices. |

